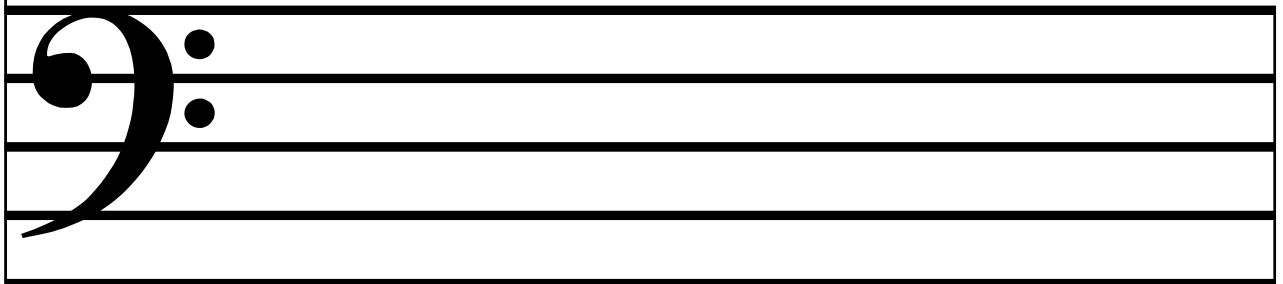
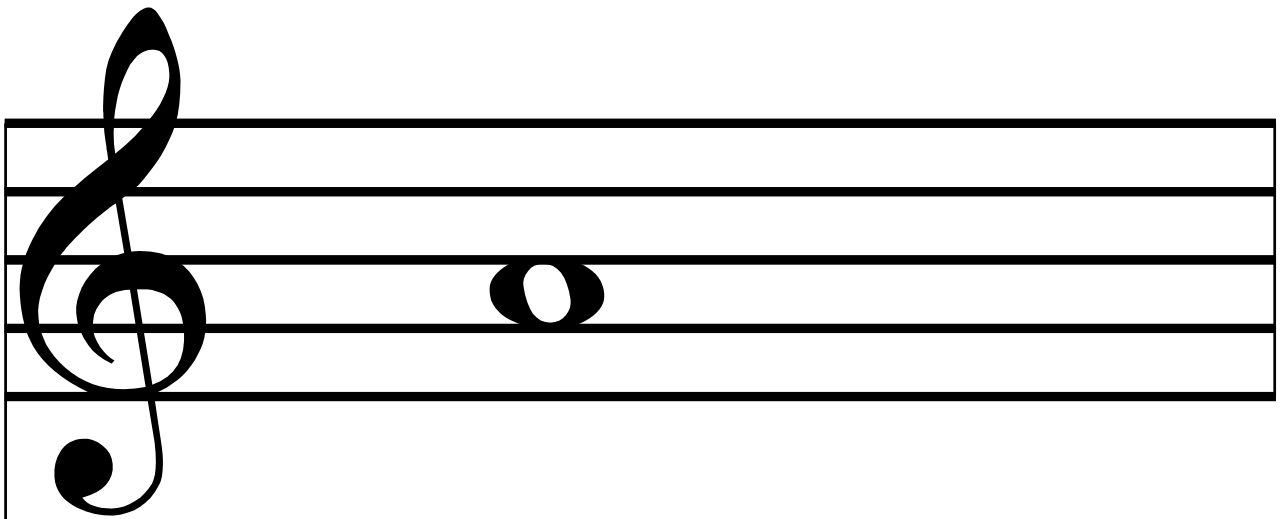
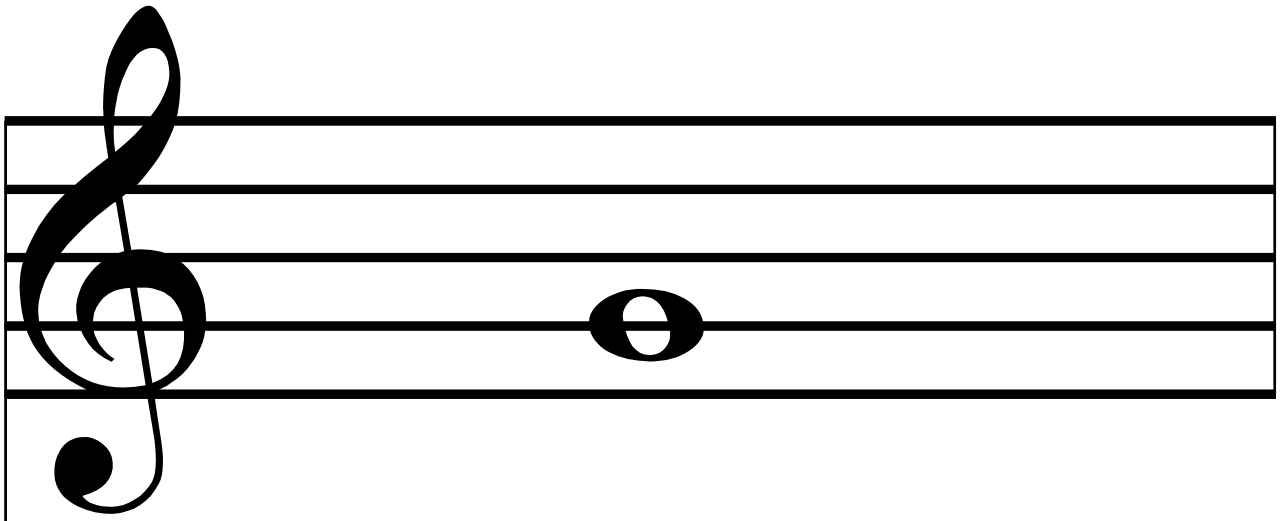


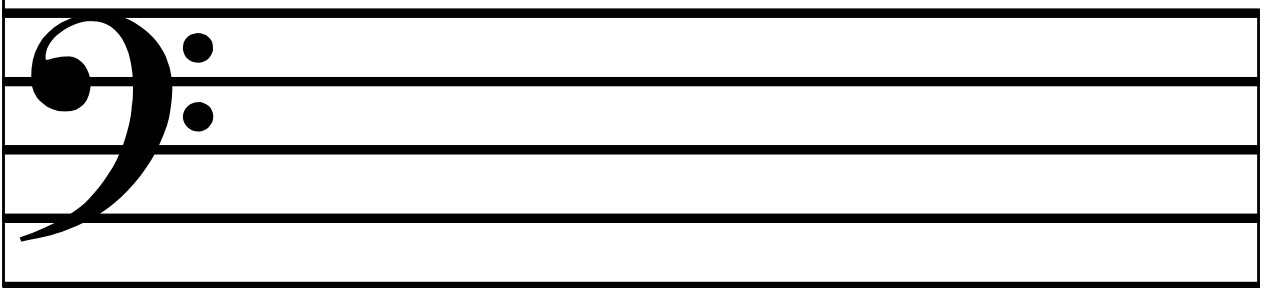
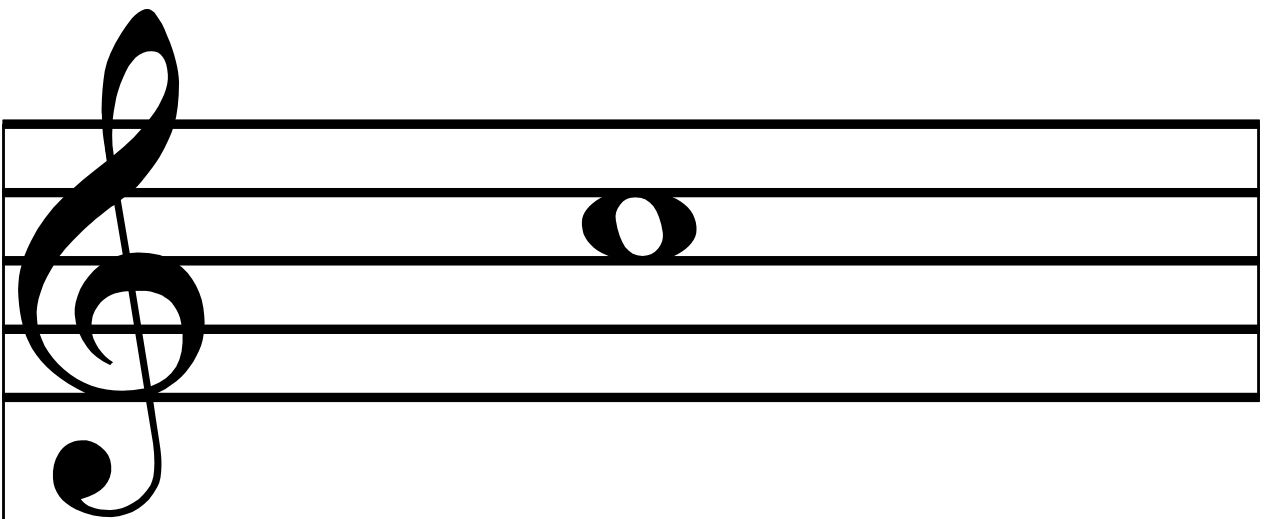
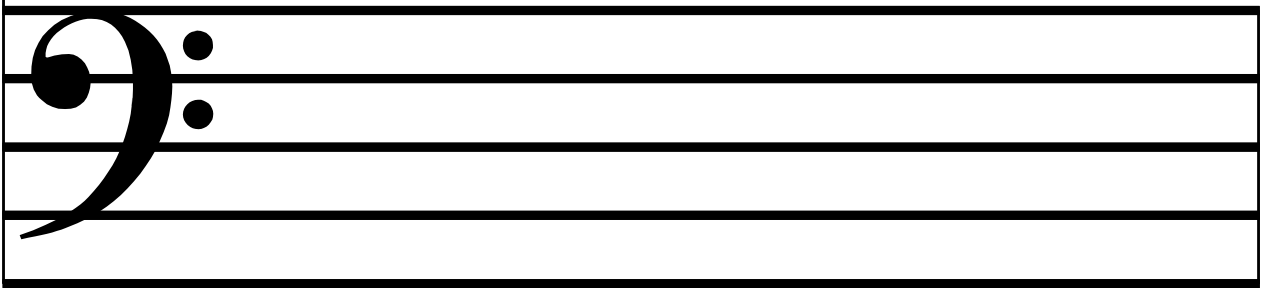
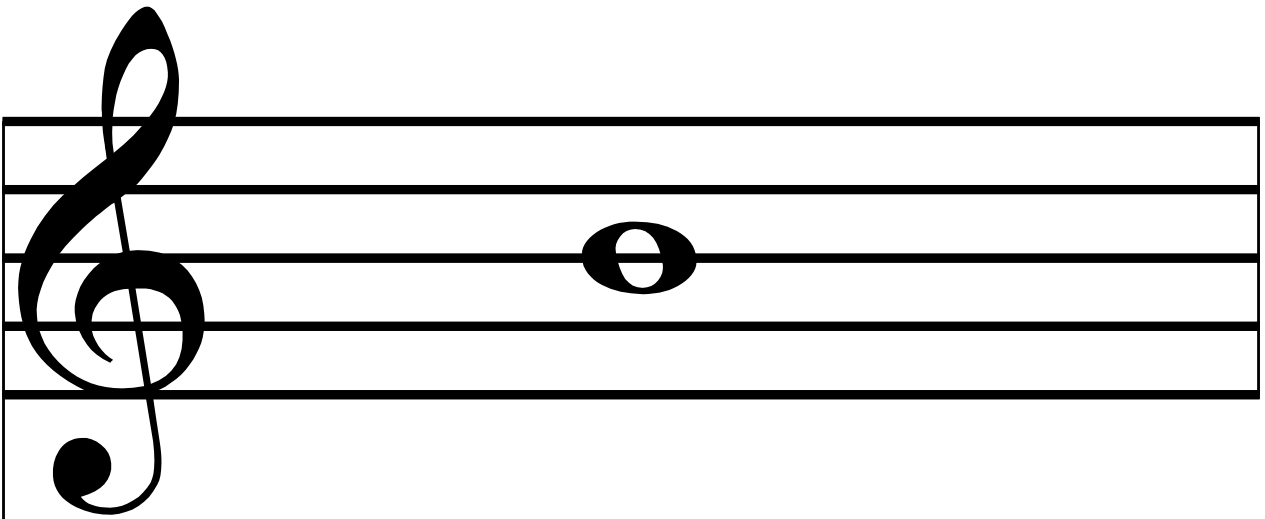
A musical staff with a treble clef. A whole note is placed on the second line from the bottom, representing the note D4.

A musical staff with a treble clef. A whole note is placed on the second space from the bottom, representing the note E4.

A musical staff with a treble clef. A single whole note is placed on the second line from the bottom, representing the note G4.

A musical staff with a treble clef. A single whole note is placed on the second line from the bottom, representing the note G4.





A musical staff with a treble clef. A single whole note is placed on the second line from the bottom, representing the note G4.

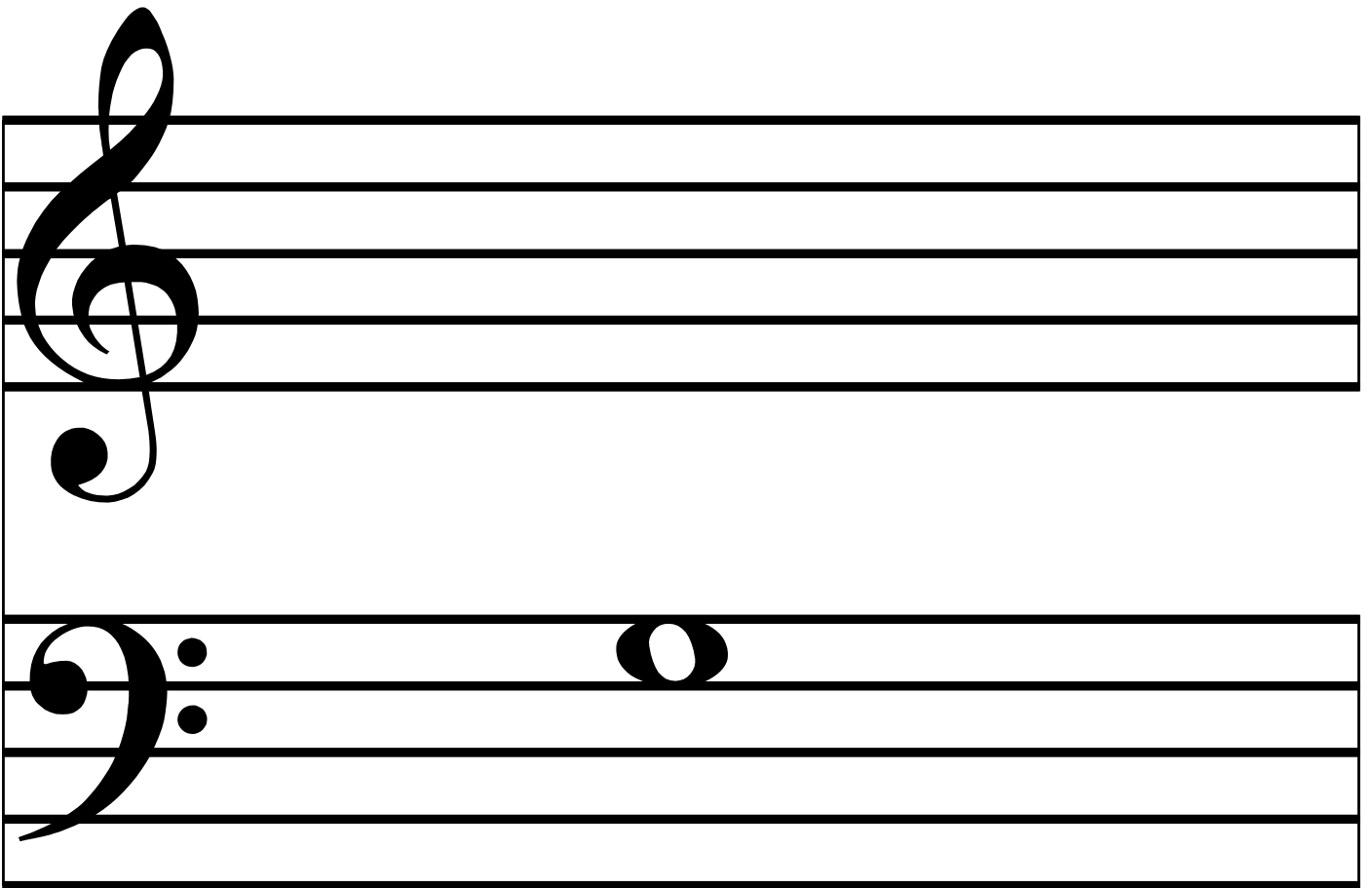
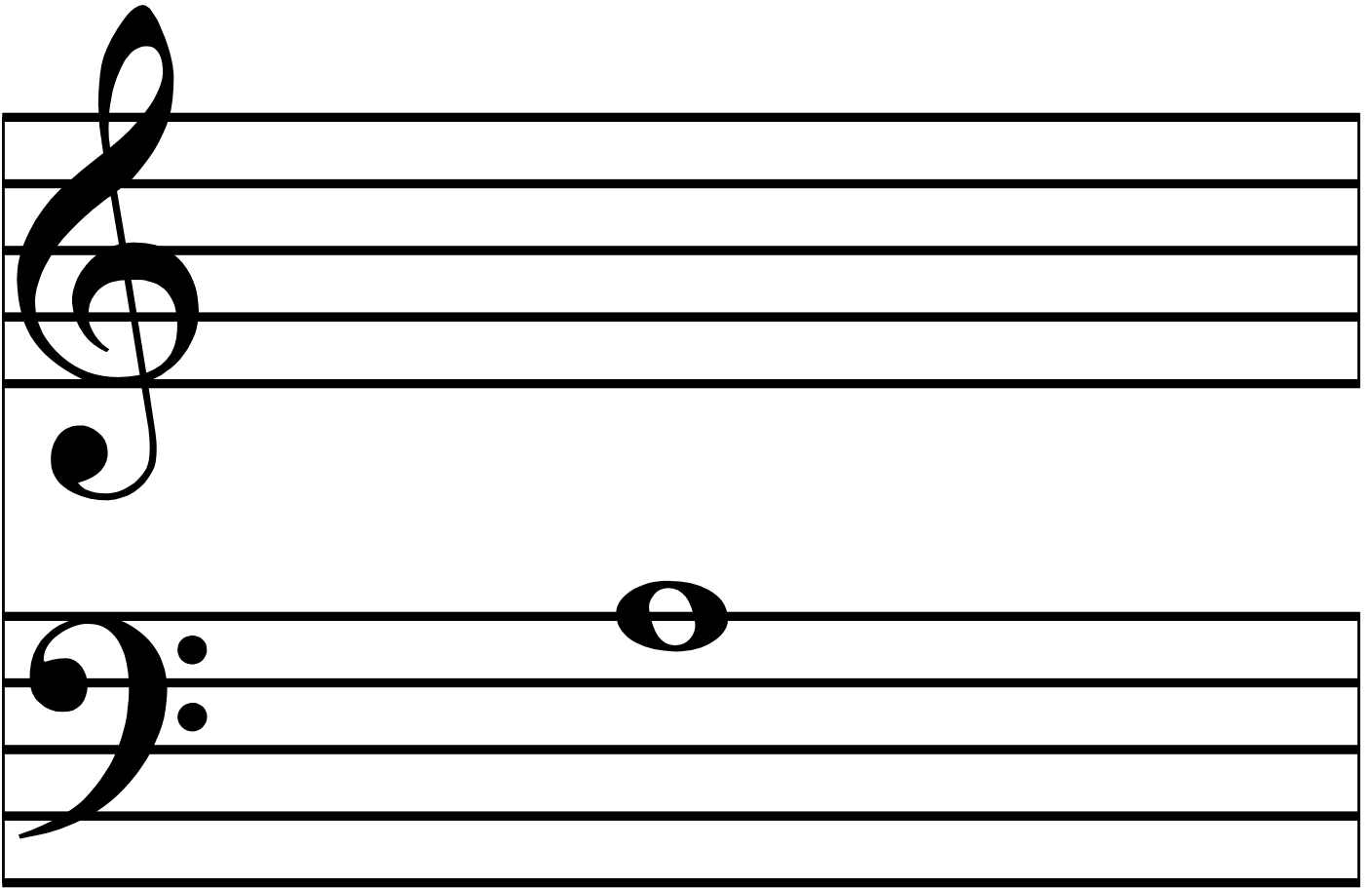
A musical staff with a treble clef. A single whole note is placed on the second line from the bottom, representing the note G4.

A musical staff system consisting of two staves. The top staff features a treble clef and a whole note on the top line (F4). The bottom staff features a bass clef. Both staves are otherwise empty.

A musical staff system consisting of two staves. The top staff features a treble clef and a whole note on the top line (F4). The bottom staff features a bass clef. Both staves are otherwise empty.

A musical staff consisting of two systems of five lines each. The top system features a treble clef on the left. The bottom system features a bass clef on the left. A single whole note is positioned in the center of the staff, between the two systems, with its stem pointing downwards.

A musical staff consisting of two systems of five lines each. The top system features a treble clef on the left. The bottom system features a bass clef on the left. A single whole note is positioned in the center of the staff, between the two systems, with its stem pointing downwards.





A musical staff consisting of two systems of five lines each. The top system features a treble clef on the left. The bottom system features a bass clef on the left and a whole note on the second line from the bottom.

A musical staff consisting of two systems of five lines each. The top system features a treble clef on the left. The bottom system features a bass clef on the left and a whole note on the second line from the bottom.

